

To use this product always in its best condition, please clean periodically.

Head cleaning

When nozzle clogging is found in nozzle check, conduct head cleaning. Head cleaning consumes ink.

There are several cleaning modes in this product. Please use them accordingly based on your usage condition.

Short cleaning	Consumes less ink than Normal cleaning.
Normal cleaning	Conduct nozzle check before and after printing, and use when nozzle clogging is found.
Long cleaning	Consumes more ink than Normal cleaning. When nozzle clogging still occurs after normal cleaning, conduct Long cleaning.
Little Charge	Much better cleaning results can be expected than Long cleaning if necessary.

Steps for head cleaning

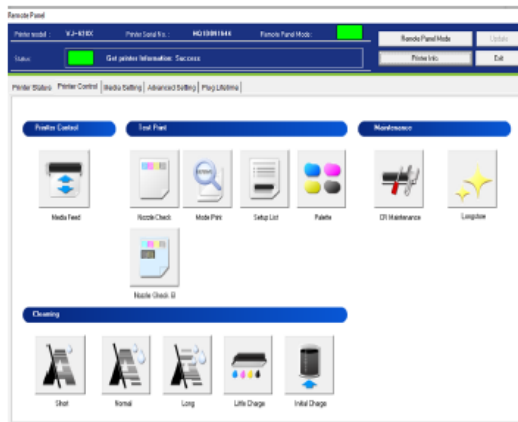
Use the MSM for the above cleaning cycles then perform a nozzle check. If nozzles remain clogged perform another cleaning and nozzle check.

[1]



Open MSM and go to "Printer control"

[2]

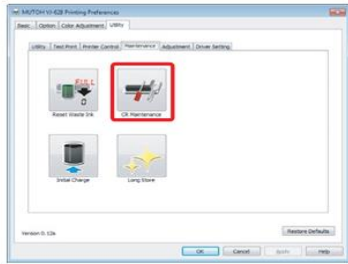


Select a mode of cleaning "short, normal or long" and click [Start].

• Cleaning starts.

If nozzle clogging still remains repeat the last step .

[2]

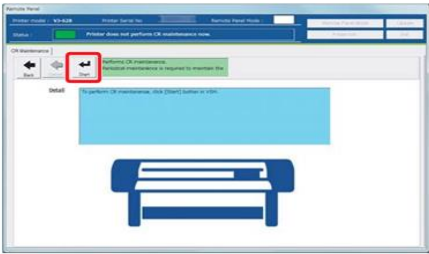


Click [CR Maintenance].

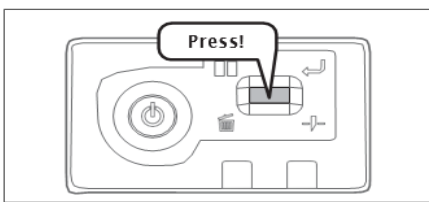
Note

- MSM is launched directly.

Click Start



[3]



Short press the operation key on the operation panel.

- The carriage moves to the maintenance position inside the front cover.

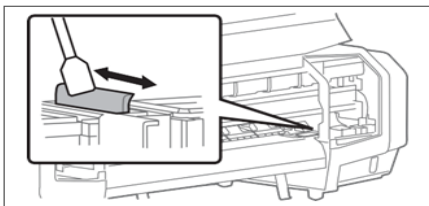
[4] Open the front cover.

Important!

When cleaning the cleaning wiper, please note the followings.

- Use a cleaning stick in dry condition. If moisten with water or solution, it can cause damage to the print head.
- Do not reuse a cleaning stick. Dusts can adhere causing damage to the print head.
- Standard cleaning time should be within 5 minutes. If it takes longer, the stick can dry causing damage to the print head.

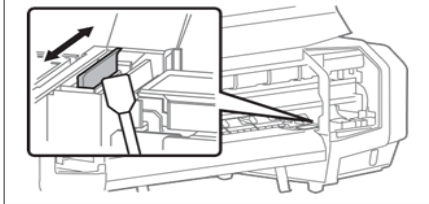
[5]



Wipe the cleaning wiper with a cleaning stick.

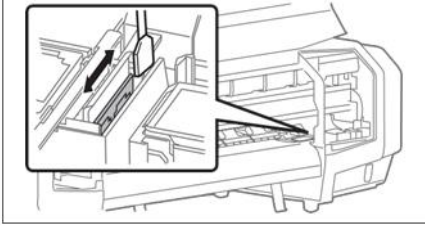
- Wipe the left side surface of cleaning wiper going back and forth.

[6]



Wipe the right-side surface of cleaning wiper going back and forth.

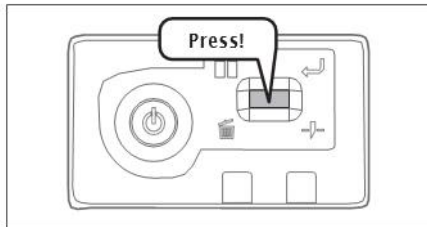
[7]



Wipe the right side surface of the base of cleaning wiper going back and forth.

[8] Close the front cover.

[9]



Short press the operation key on the operation panel.

- The carriage moves to the original position inside the front cover.