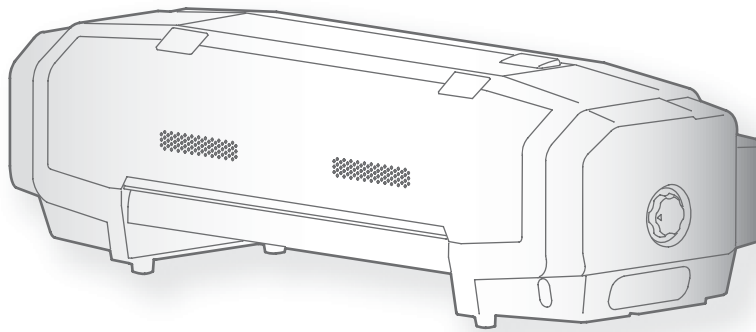


# VJ-628D

## Quick Start Guide



- 
- Unauthorized copying or duplication of the whole or part of the contents of this manual is prohibited.
  - Every care has been taken in writing the contents of this manual, but please contact STS or the dealer you purchased the product from if you find any unclear, erroneous or otherwise unsatisfactory content in the manual.
  - Please be aware that STS will not be liable in any way for failures or accidents that result from handling or operating the printer according to any procedures other than those set forth in this manual.
  - Company names and product names that appear in this manual are registered trademarks of the respective companies.

## For Users in Europe



The CE marking is a mandatory European marking for certain product groups to indicate conformity with the essential health and safety requirements set out in European Directives.

By affixing the CE marking, the manufacturer, his authorized representative, or the person placing the product on the market or putting it into service ensures that the item meets all the essential requirements of all applicable EU directives and that the applicable conformity assessment procedures have been applied.

## For Users in the United States

This equipment has been tested and found to comply with the limits for a Class A digital device, pursuant to Part 15 of the FCC Rules. These limits are designed to provide reasonable protection against harmful interference when the equipment is operated in a commercial environment.

This equipment generates, uses, and can radiate radio frequency energy and, if not installed and used in accordance with the instruction manual, may cause harmful interference to radio communications. Operation of this equipment in a residential area is likely to cause harmful interference in which case the user will be required to correct the interference at his own expense.

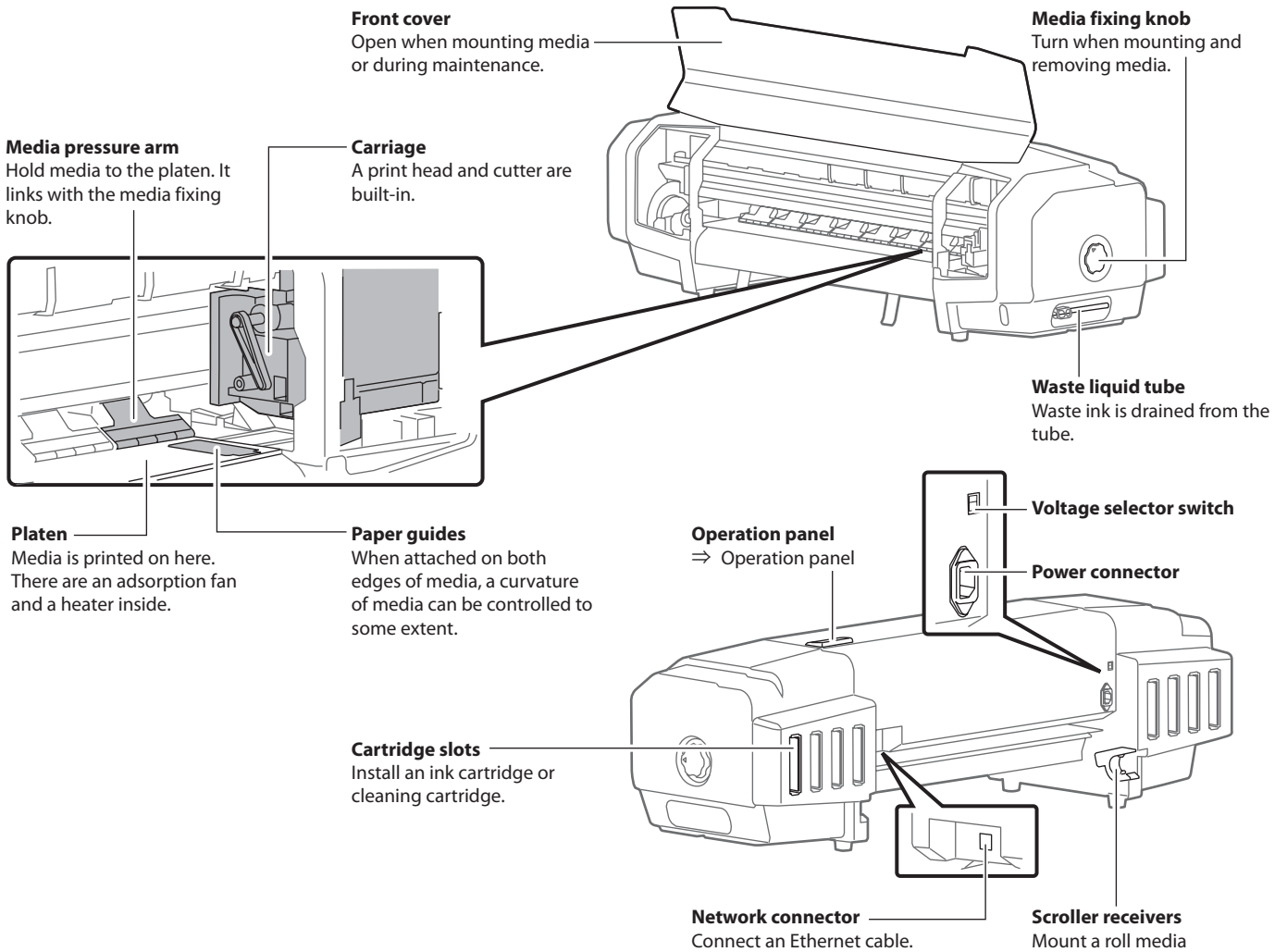
## Warranty Limitations

- STS Inks warrants part repair or replacement as a sole measure only if a failure is found in the system or in the materials and workmanship of the product the seller produced. However, if the cause of failure is uncertain, decide the action after due mutual consultation.
- The warranty shall not apply to any direct or indirect loss, or compensation for the loss due to the product that has been subject to misuse, neglect, or improper alternation.

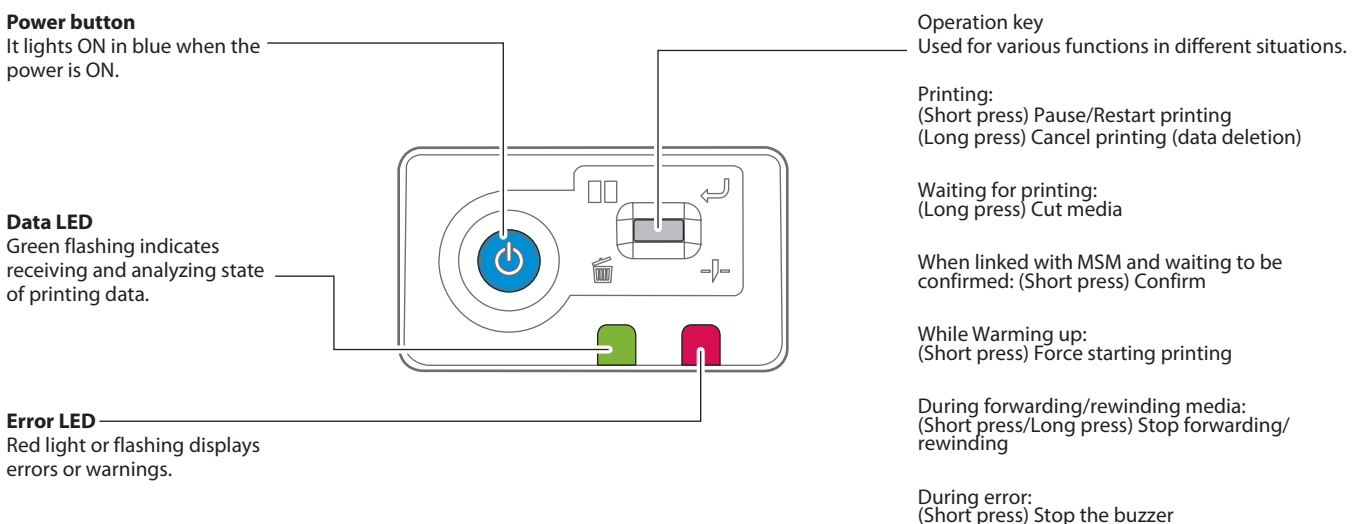
# STS VJ-628D

## Name of each part

### Printer's main body

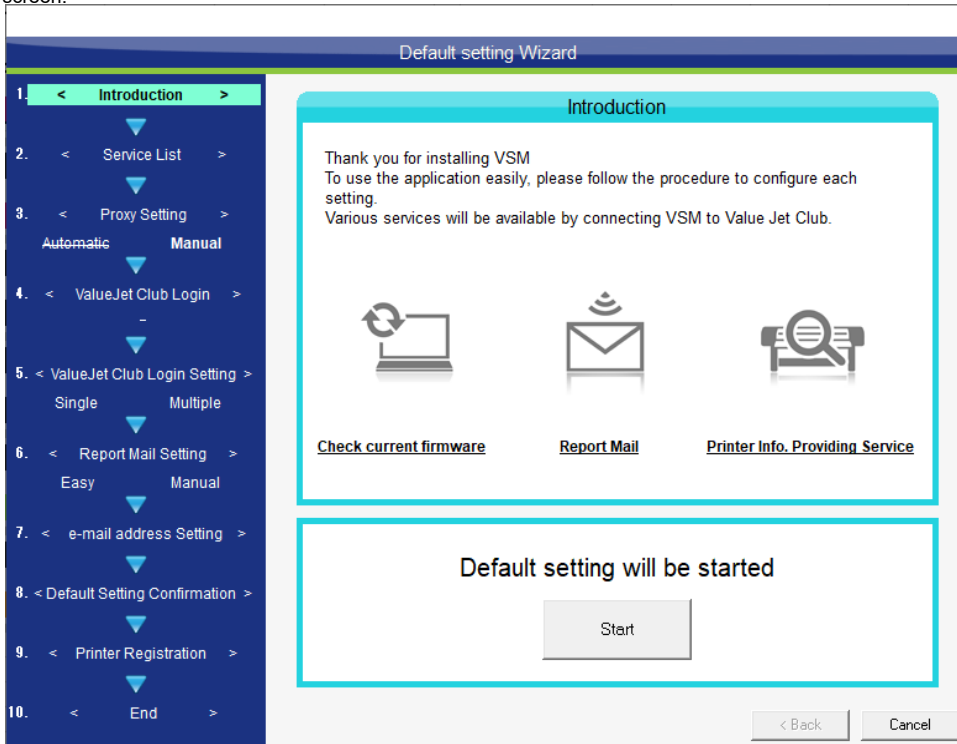


### Operation panel

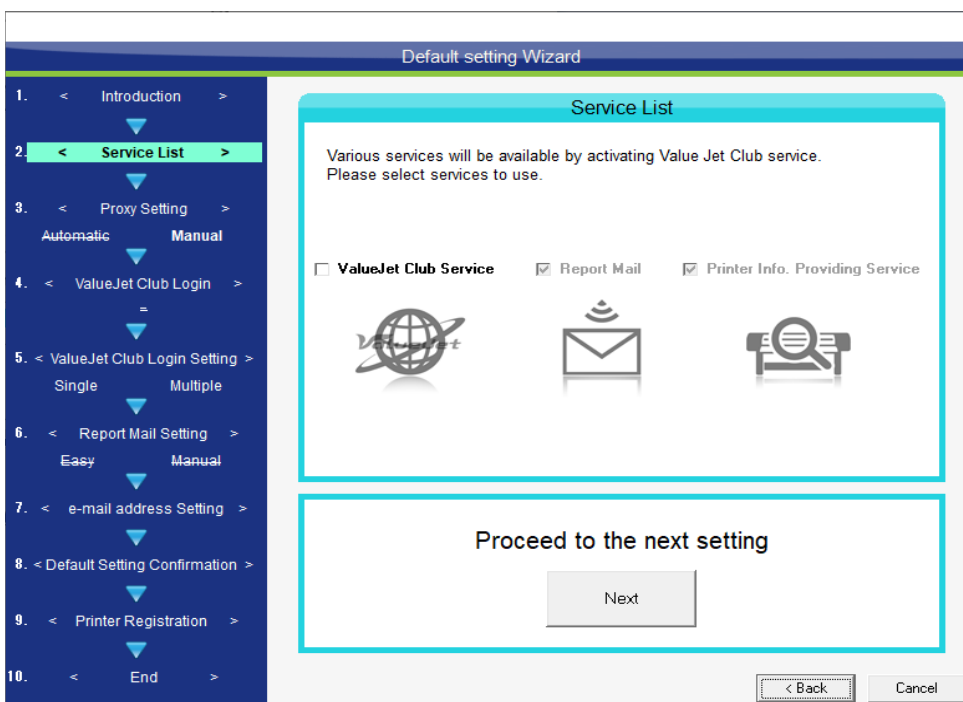


# MSM Setup / Initial Registration

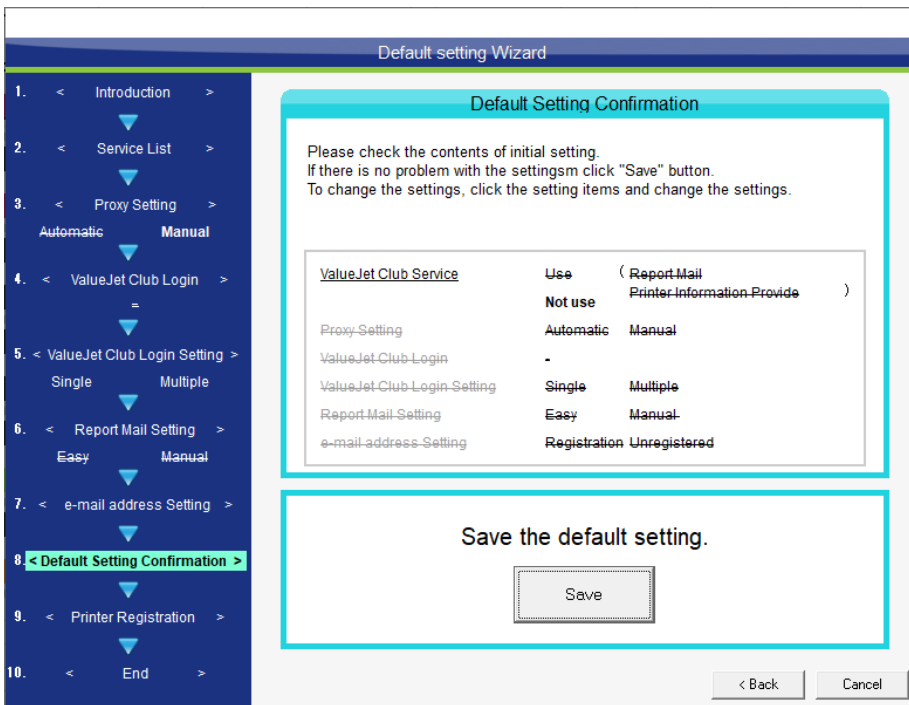
Upon the initial launch of MSM (formerly VSM) you will be faced with the following screen.



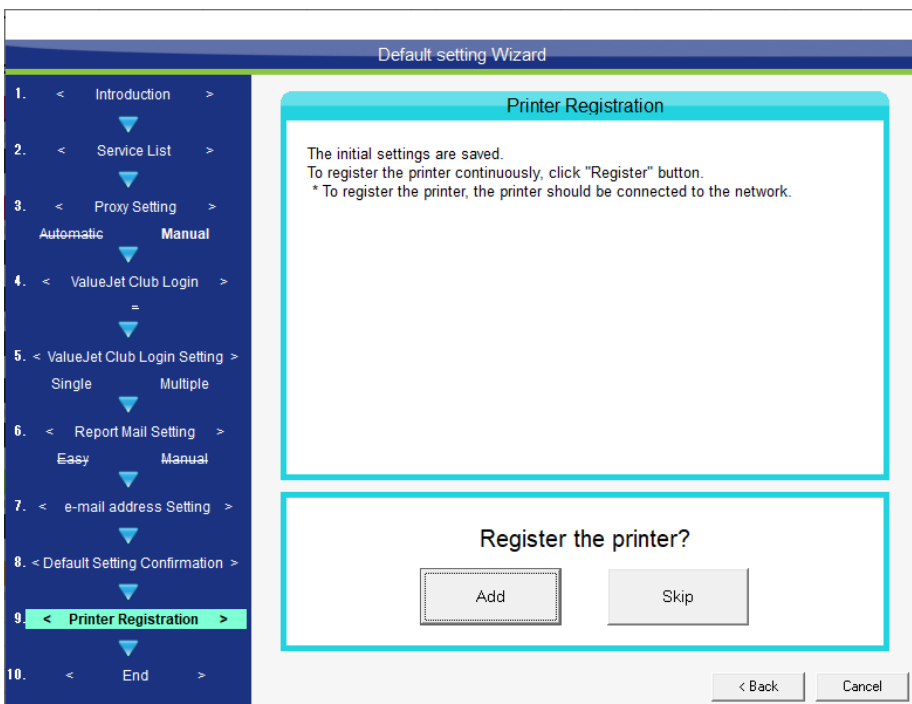
1. Click Start to commence, and untick the ValueJet Club Service.



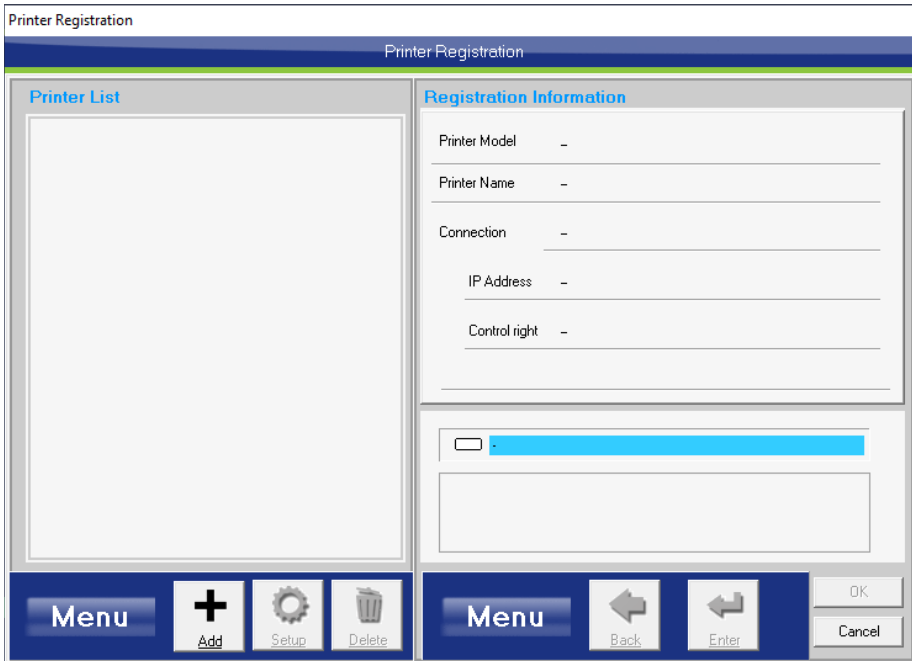
2. Click Save



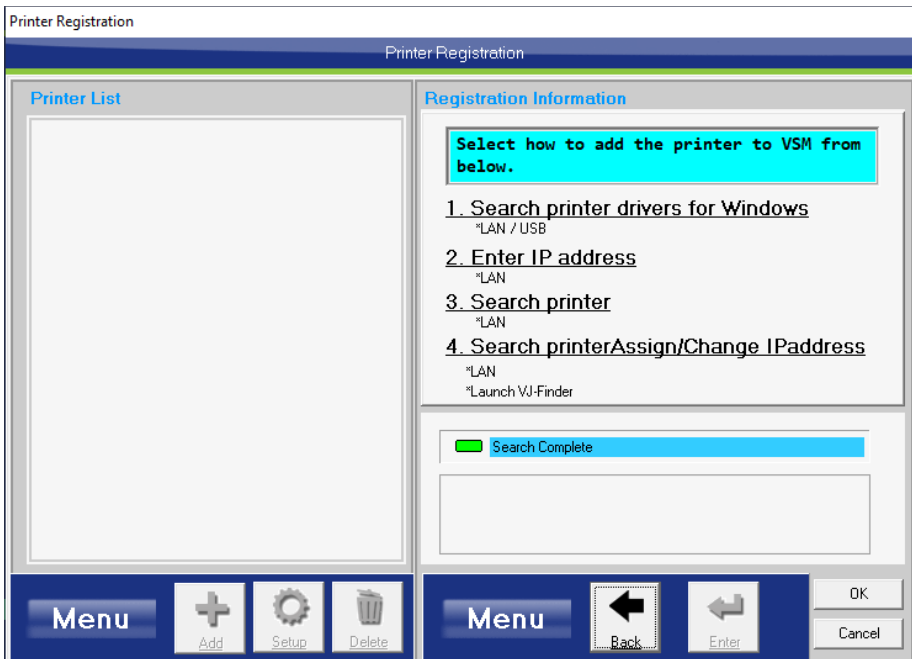
3. If you did not previously register a printer you may do so now



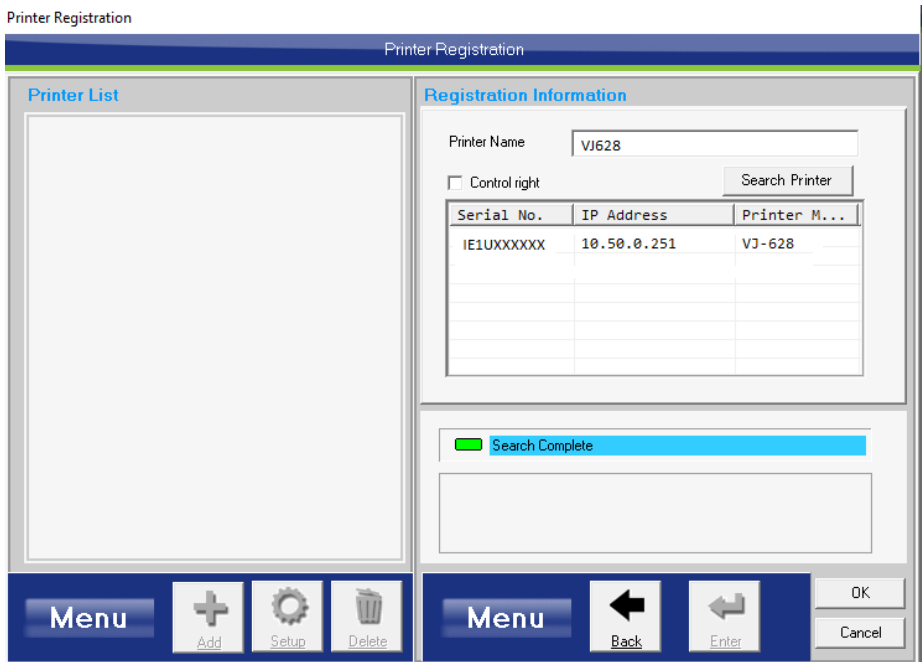
4. Click Add+



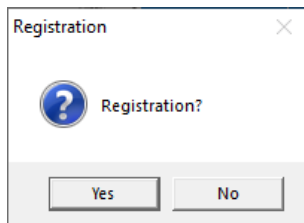
5. Click Search Printer



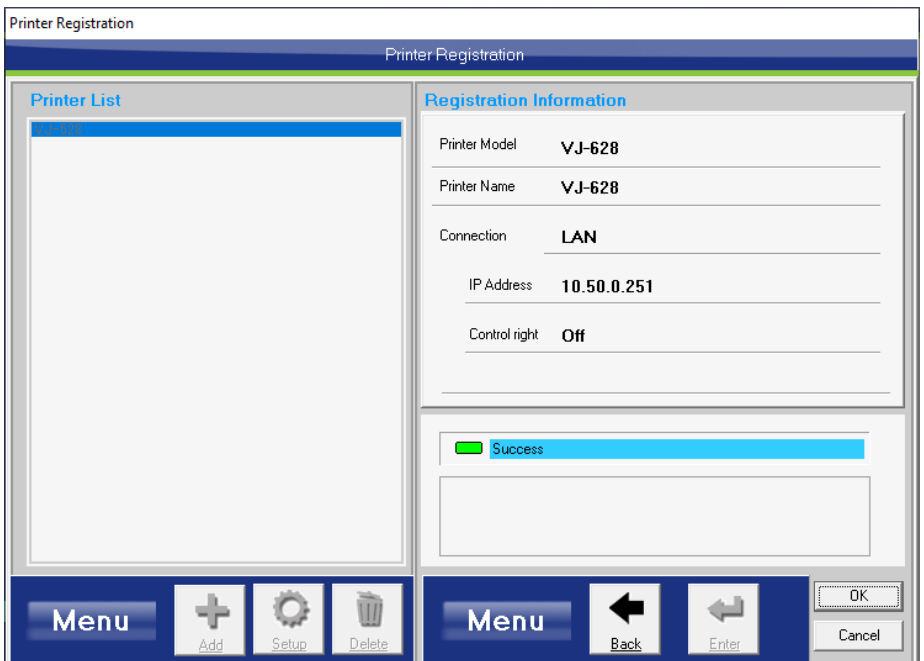
6. Enter a printer name, select the printer and then click Enter



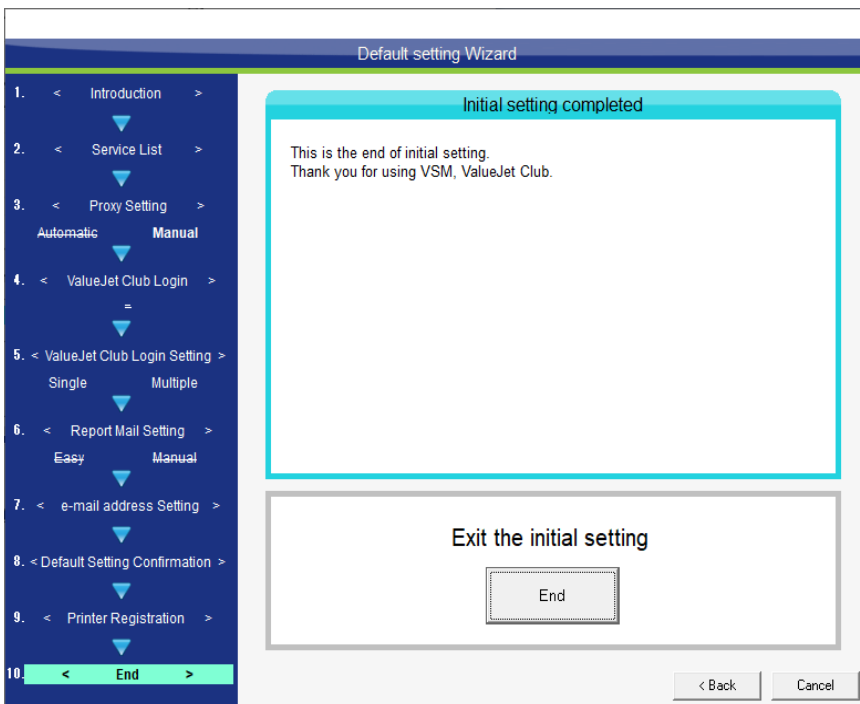
7. Click Yes to register



8. Click OK to complete the registration



9. Click End to finish the setup



MSM will now open.



## Conditions of usable media

Roll media can be used in this product.

### Usable size

---

Maximum width		630mm (If paper tube > media width, then paper tube width)
Maximum thickness	Head height when Low	0.3mm
	Head height when High	1.3mm
Roll outer diameter		150mm
Paper tube diameter		2 or 3 inches
Weight		9 kg or less

---

### Cautions when handling film

---

- **Please use recommended film.** Contact STS sales for recommended film.
- Be cautious of expansion and contraction of media from temperature and humidity. After opening an unopened media, leave the media for approximately 30 minutes to adjust to environments.
- Do not use media with folds, scratches, tears, curvatures, winding curl and weaving.
- Do not leave a roll media set in this product for a long time. The media can be curled becoming unsuitable for printing. When not using for a long time, remove a roll media and store in its original package box.

## Cautions in using this product

Please use this product periodically

---

**It is recommended to use this product once a week. When left unused for a long time, the print head nozzles can get clogged causing damage.**

Conduct periodic maintenance

---

**This product requires daily maintenance.**

- Check the nozzle before and after printing.  
If nozzle clog is found, conduct a head cleaning.
- Clean the cleaning wiper once a week.
- When this product is not used for a long time (a week or more), conduct a head cleaning once a week.
- Clean its exterior and inside once a month.
- Drain waste ink in the waste liquid tank periodically.

**Some parts need to be replaced periodically**

---

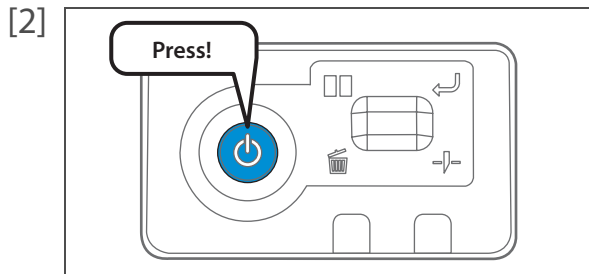
In this product, there are some parts required to be replaced after a long-term use.

- Parts required to be replaced by users: absorption material for the flushing box, cutter
- Parts required to be replaced by service personnel: Various motors, print head

# Powering ON/OFF

## Turning the power ON

[1] Close the front cover.

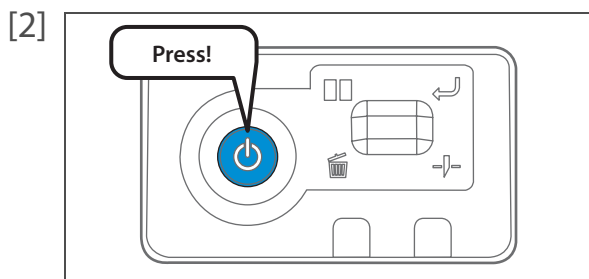


Press the power button of this product to turn the power ON.

- The blue light becomes ON.
- This product starts its initialization operations.

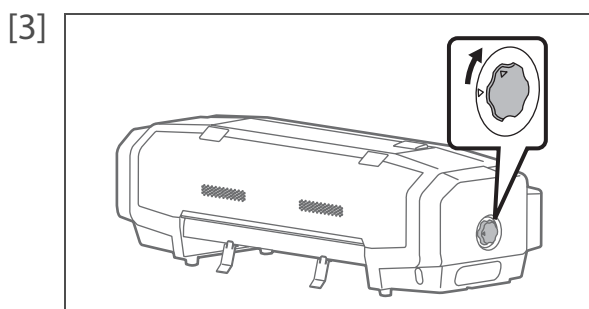
## Turning the power OFF

[1] Make sure printing is finished.



Press the power button of this product to turn the power OFF.

- The blue light becomes OFF.
- This product starts its powering off operations.



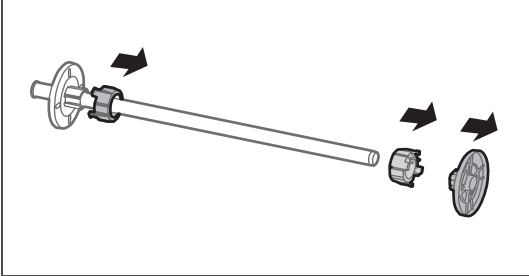

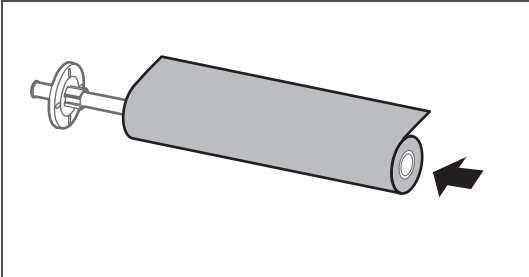

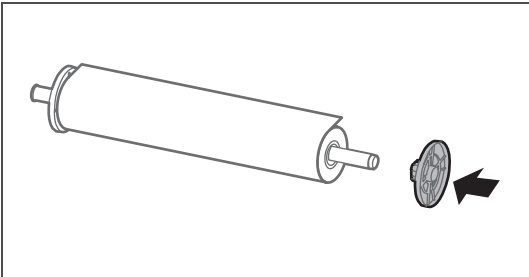
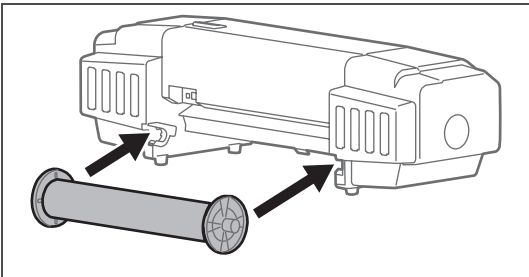

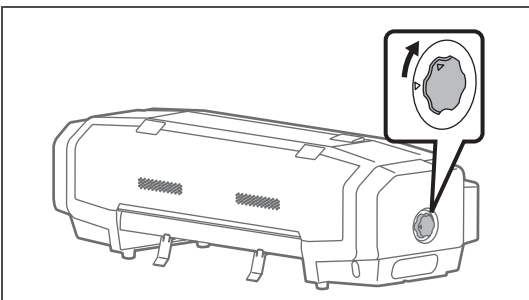
Turn the media fixing knob to release the lock.

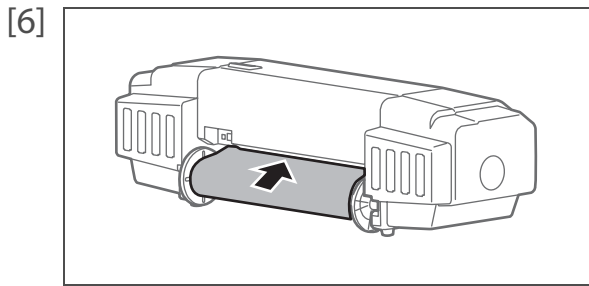
 **Note**

When not using this product, release the lock of the media fixing knob regardless of power being OFF.

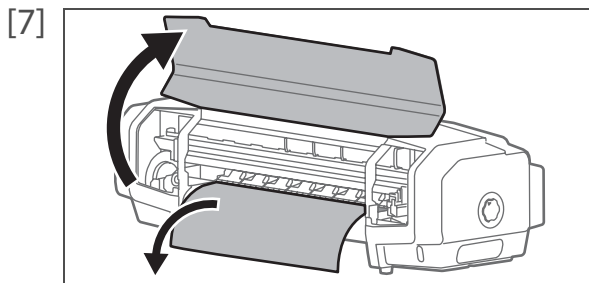
# Printing

## Setting up media

- [1]  Remove the 3 inches adaptor and media stopper (movable) from the scroller.
-  **Note**
- When using a roll media with 3 inches paper tube diameter, leave the 3 inches adaptor on.
- [2]  Attach a roll media to the scroller.
-  **Note**
- Attach the media in the rolling direction to be the same with the figure.
  - Push in the roll media so that there is no space with the media stopper (fixed).
- [3]  Push in the media stopper (movable) until there is no space with the roll media.
- [4]  Attach the scroller to the scroller receivers.
-  **Note**
- Attach the media stopper (movable) to face to the right, when this product is looked from its back.
- [5]  Turn the media fixing knob to release the lock.



Let the roll media pass through the paper feed slot.

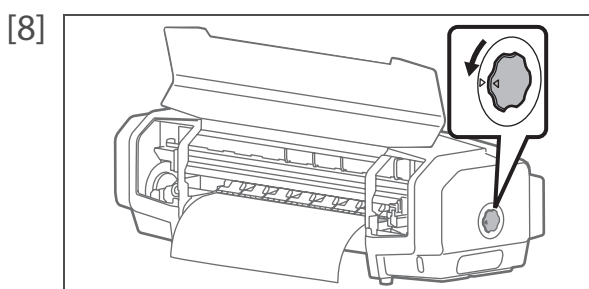


- Open the front cover.
- Pull out the media roller from the front side of the product.

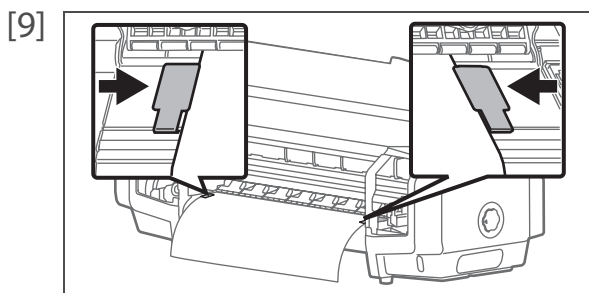


Note

If the media gets loose, rewind the scroller to correct the looseness.

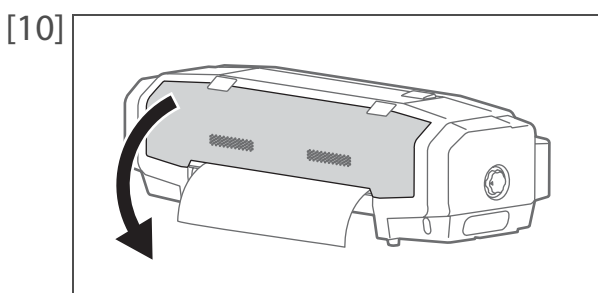


Turn the media fixing knob to lock.



Set the paper guides to media.

- Slide from both sides of platen and set.



Close the front cover.

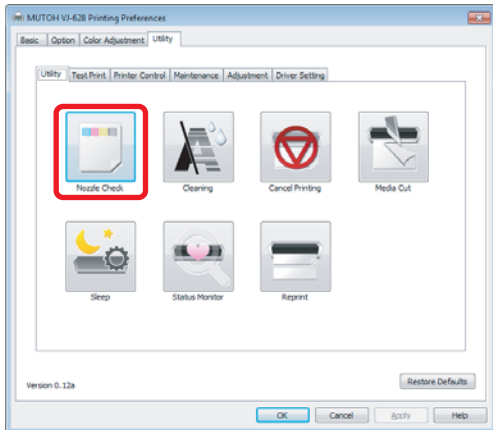
# Nozzle check and cleaning

Before starting everyday operation, please check the nozzle. If nozzle clog is found, conduct cleaning.

## 1. Nozzle check steps

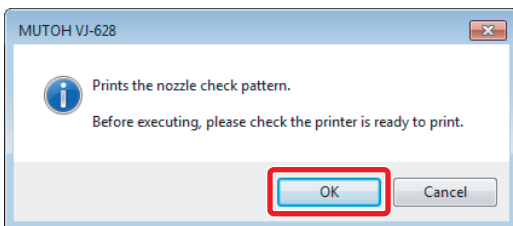
[1] Display the Printing Preferences screen of printer driver.

[2] Click [Nozzle Check] in the [Utility] tab under the [Utility] tab.  
• The "MUTOH VJ-628" window opens.

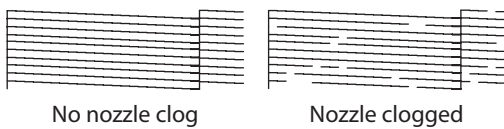


The same can be also done with the remote panel of MSM.

[3] Click [OK].  
• A pattern is printed.

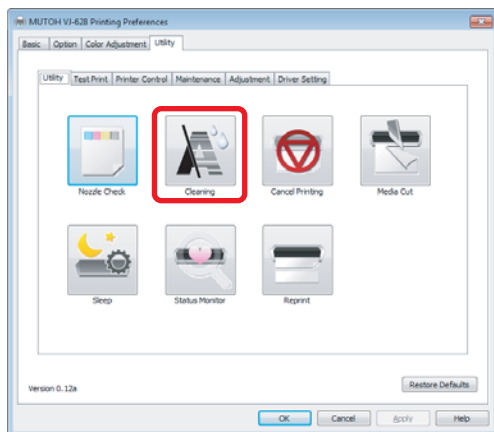


[4] Check the pattern.



## 2. Cleaning steps

[1]



Click [Cleaning] in the [Utility] tab under the [Utility] tab.

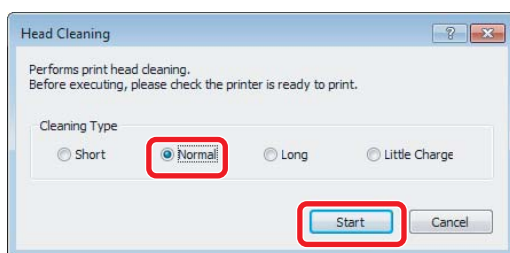
- The [Head Cleaning] window opens.



Note

The same can be also done with the remote panel of MSM.

[2]



Select [Normal] and click [Start].

- A cleaning starts.

[3] Conduct a nozzle check, again.

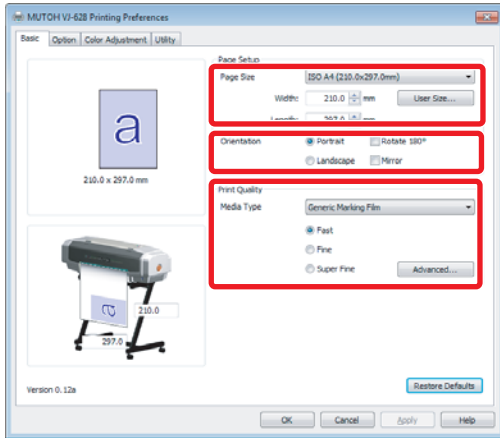
- If there is still nozzle clog, repeat [Normal] cleaning.

## Starting printing

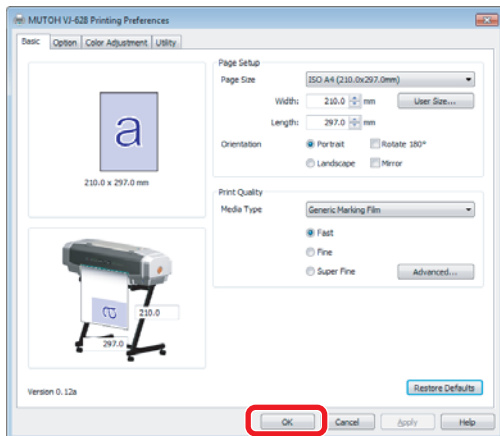
In this section, a method to print from the printer driver is explained.

- [1] Open printing data from application software to execute printing.
- [2] Open the print setup screen of the VJ-628 printer driver from the application software.

- [3] Conduct print setup.
  - Set [Paper Size], [Orientation] and [Print Quality].



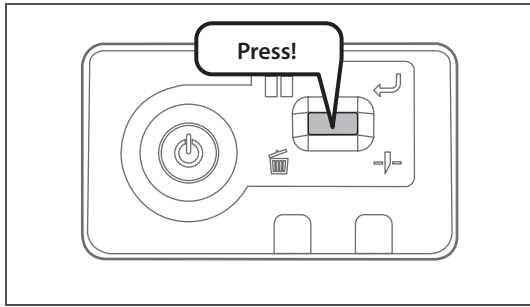
- [4] Click [OK].



- [5] Printing is executed.
- [6] Cut the media.



## Pausing/Restarting printing



During printing, short press the operation key on the operation panel.

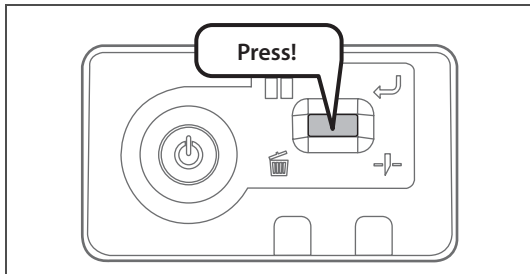
- The printing pauses.
- Press the operation key again to restart the printing.

### Note

- In this operation, printing data sent to the product are not deleted.
- Please see the followings when canceling printing and deleting data.

## Canceling printing

### Canceling printing from the operation panel



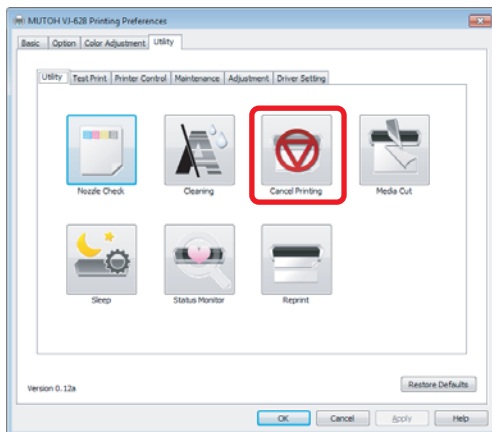
Press and hold the operation key on the operation panel for 2 seconds or more during printing.

- The printing is canceled (it cannot be restarted).
- The printing data sent to the product are deleted.

### Canceling printing from printer driver/MSM

[1] Display the Printing Preferences screen of printer driver during printing.

[2]



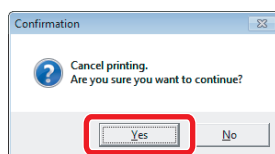
Click [Cancel Printing] in the [Utility] tab under the [Utility] tab.

- The remote panel of MSM launches.
- The [Confirmation] window opens.

### Note

- MSM can be launched directly

[3]



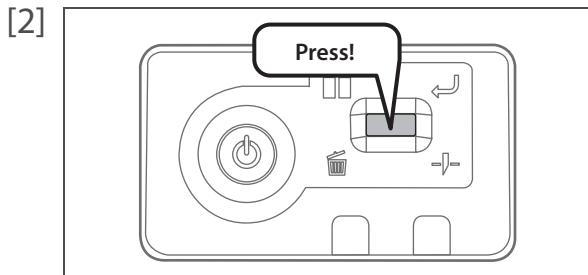
Click [Yes].

- The printing is canceled.

# Cutting media

## Cutting from the operation panel

[1] Check printing is done.



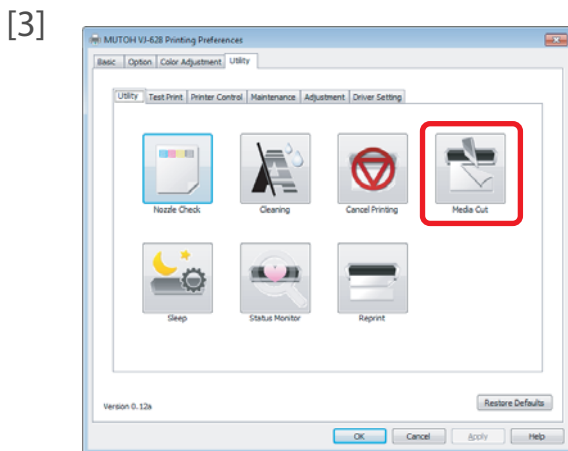
Press and hold the operation key on the operation panel for 2 seconds or more.

- The built-in cutter in the product cuts the media.

## Cutting from printer driver/MSM

[1] Check printing is done.

[2] Display the Printing Preferences screen of printer driver.



Click [Media Cut] in the [Utility] tab under the [Utility] tab.

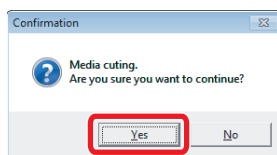
- The remote panel of MSM launches.
- The [Confirmation] window opens.

 **Note**

- MSM can be launched directly.



[4]



Click [Yes].

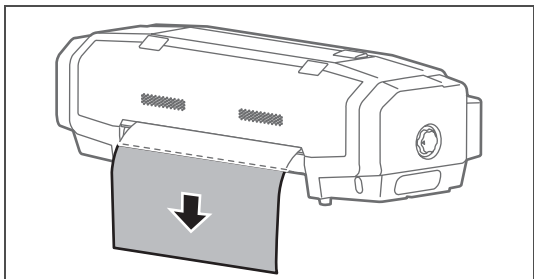
- The built-in cutter in the product cuts the media.

## Cutting by hand

For media that cannot be cut with the built-in cutter in the product, please cut following the next steps.

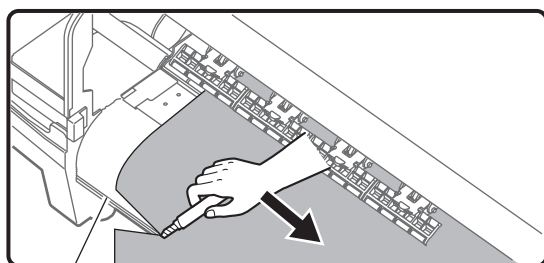
[1] Check printing is done.

[2] Feed the media to a position where printing results can be cut.

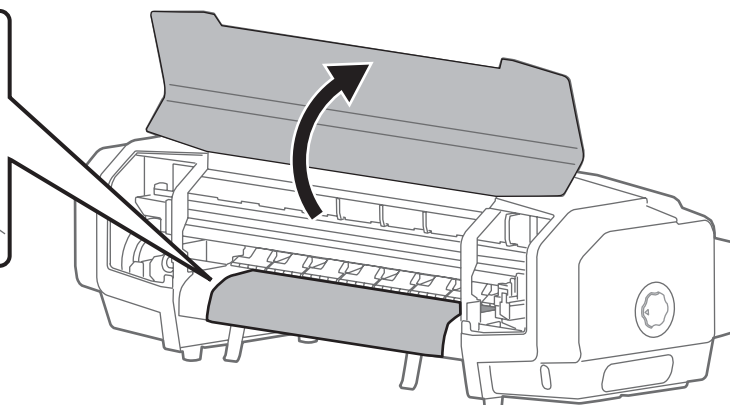


[3] Open the front cover, and cut the media with a commercial available cutter.

- Cut along the media cut groove.



Media cut groove



[4] Close the front cover.

