

Transporting

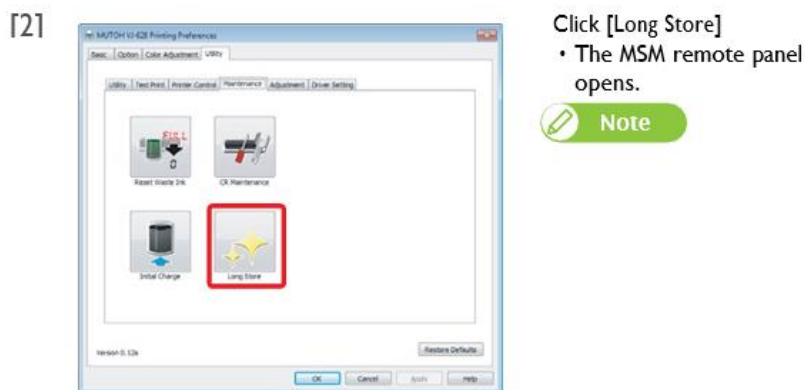
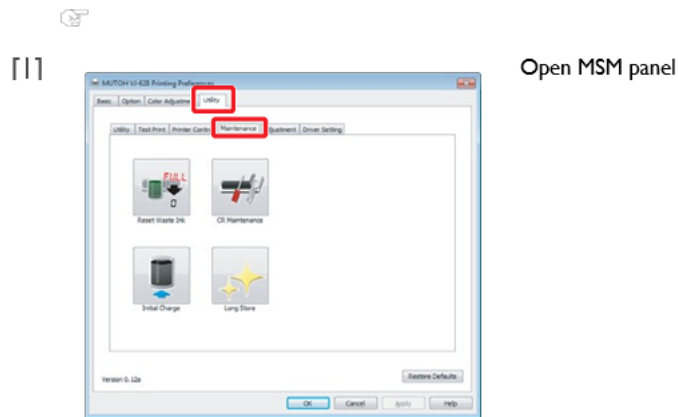
When transporting this product, it is necessary to wash inside with cleaning cartridge, discharge waste ink and fixate the print head with packaging material. If transported as it is, it can cause ink leakage and damage to the print head.

When it is used again, conduct reinstallation work and initial charging.

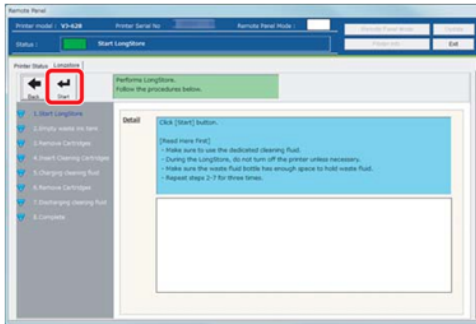
Important!

- When moving this product, always empty the waste ink tank even if it is for a short distance. If ink splashes inside the waste ink tank while being moved, it can cause damage.
- Do not tilt, set against something or place this product upside down. Otherwise the ink may leak or the handling mentioned above may cause abnormality.

1. Head cleaning and discharging waste ink

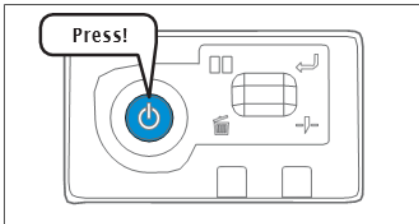


- [3] Click [Start] in the [Longstore] tab.
- Conduct head cleaning following the screens.
 - After head cleaning is done, do not conduct re-launching and initial charging.



- [4] Empty the waste ink tank.

[5]



- Turn the power button of this product OFF.
- Blue light becomes OFF.
 - The product starts powering off operations.